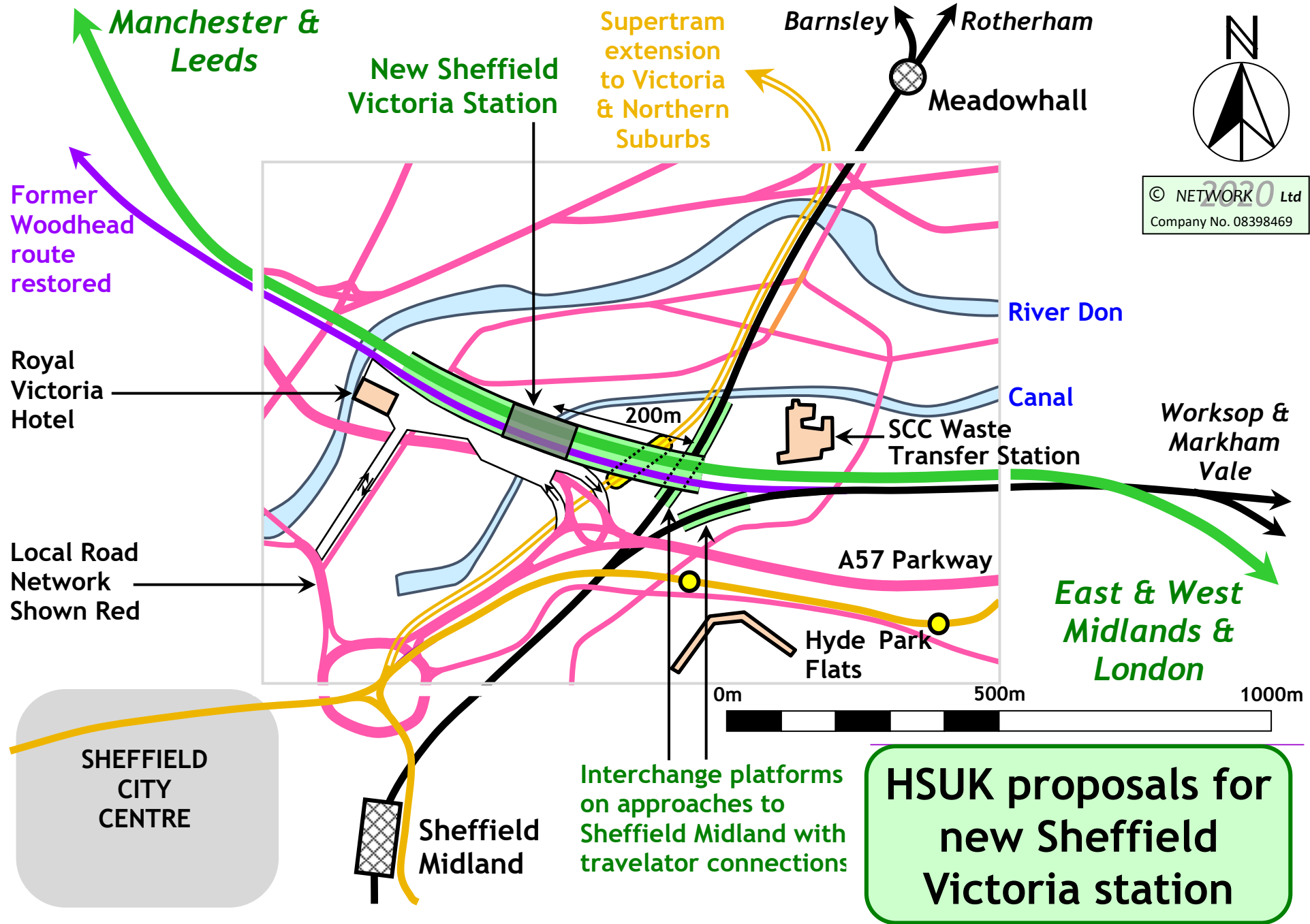


Sheffield



- HSUK/Network North will serve Sheffield at new station on site of former Sheffield Victoria station.
- This will form Sheffield's new rail hub, integrating high speed intercity services at the high level platforms and local services at low level platforms on the existing approaches to Sheffield Midland.
- Proposed HSUK works will enable establishment of greatly improved local services on all radial routes into Sheffield.



HSUK proposals for new Sheffield Victoria station

SHEFFIELD CITY CENTRE

Royal Victoria Hotel

Local Road Network Shown Red

200m

Hyde Park Flats

A57 Parkway

River Don

Canal

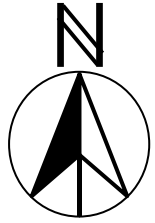
Worksop & Markham Vale

Barnsley
Rotherham
Meadowhall

Manchester & Leeds

New Sheffield Victoria Station

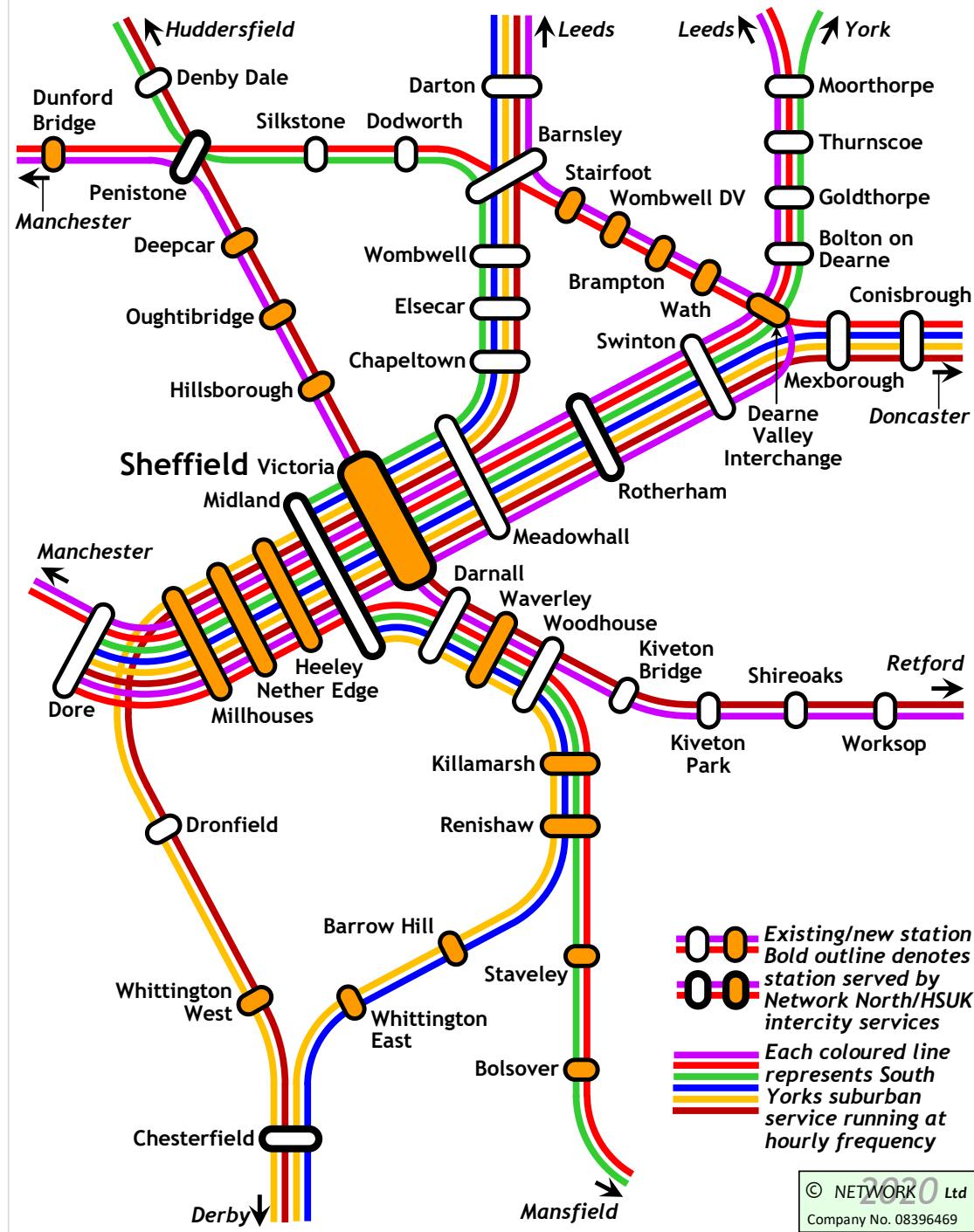
Supertram extension to Victoria & Northern Suburbs



© NETWORK Ltd 2020
Company No. 08398469

HSUK Scheme for Improved Rail Infrastructure in Sheffield City Region





HSUK Scheme for Improved Local Services in Sheffield City Region

Illustrated services repeated every 60 minutes